

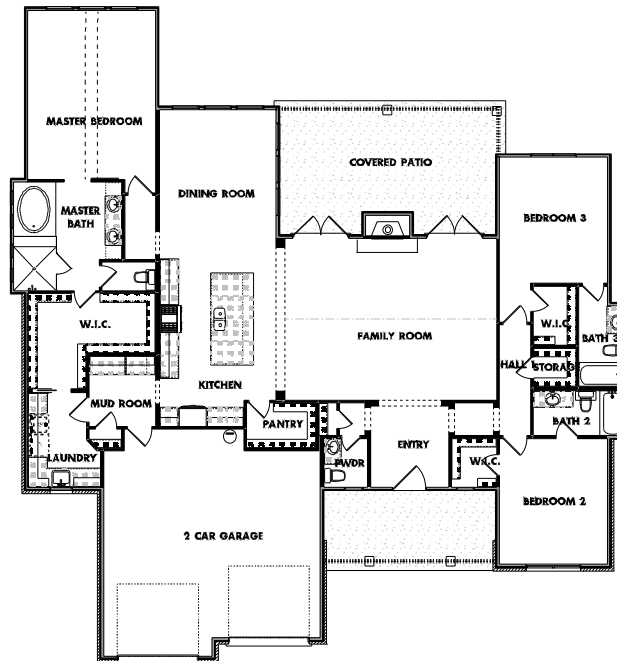


# ALAMOSA DRIVE

2594 SQUARE FOOT LIVING - ONE STORY

## FEATURES:

STONE VENEER WITH BOARD AND BATTEN EXTERIOR FINISH  
 STANDING SEAM METAL ROOF - LOW E VINYL WINDOWS  
 GAS RANGE - GAS FIREPLACE - 2 TANKLESS GAS WATER HEATERS  
 SPRAY FOAM INSULATION - HIGH EFFICIENCY AIR CONDITIONING W/  
 VARIABLE SPEED AIR HANDLER, MEDIA FILTER, BUILT-IN  
 DEHUMIDIFIER WITH FRESH AIR INTAKE AND WI-FI CONTROLS  
 EIGHT FOOT TALL SOLID CORE DOORS - CUSTOM CABINETS WITH  
 GRANITE COUNTERS THROUGHOUT - PREWIRE FOR CAT 6 VIDEO  
 AND COMMUNICATION EQUIPMENT



FIRST FLOOR PLAN

08/11/17



210-365-1312

EMAIL: wolffcustomhomes@gmail.com